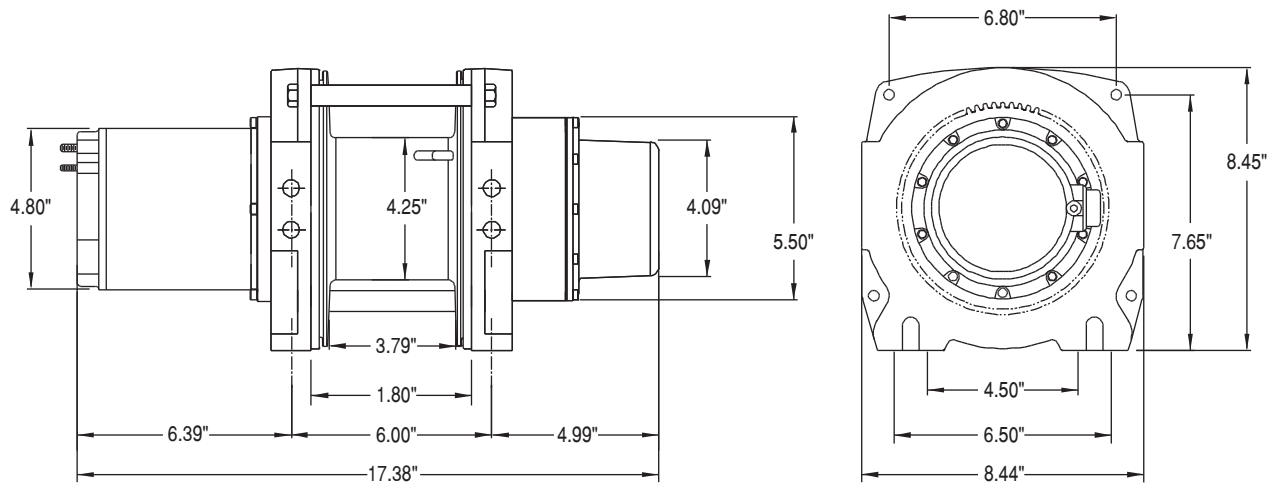


ELECTRIC PLANETARY HOISTS

DC1600

1,600 lbs Capacity



FEATURES

- Permanent Magnet Motor
- 3-Stage Planetary Reduction
- Automatic Load Brake
- Simple Wire Rope Attachment
- Rated for Hoisting

Wire Rope Capacity
1/4"
107'

PERFORMANCE

Specifications			Multi-Layer Performance			First Layer Performance		
Motor Type	Motor HP	Shipping Weight	Layer	Load (lbs)	Speed (fpm)	Load (lbs)	Speed (fpm)	Amp Draw
12V	1.8	55 lbs	1	1600	13.0	0	17.0	25
			2	1440	14.0	800	15.0	65
			3	1312	16.0	1200	14.0	85
			4	1200	17.0	1600	13.0	105
			5	1104	19.0	-----	-----	-----
24V	1.8	55 lbs	1	1600	13.0	0	17.0	12
			2	1440	14.0	800	15.0	32
			3	1312	16.0	1200	14.0	42
			4	1200	17.0	1600	13.0	55
			5	1104	19.0	-----	-----	-----

Performance based on intermittent duty cycles.

CAUTION: The final determination as to the suitability of this product for any purpose is solely that of the user. These products are not to be used to lift people or to lift anything over people.

ALLIED POWER PRODUCTS, INC.

THE WINCH & HOIST SPECIALISTS

6590 SW Fallbrook Place, Beaverton, OR 97008

(503) 626-0654 Fax (503) 646-1996

www.alliedpower.com