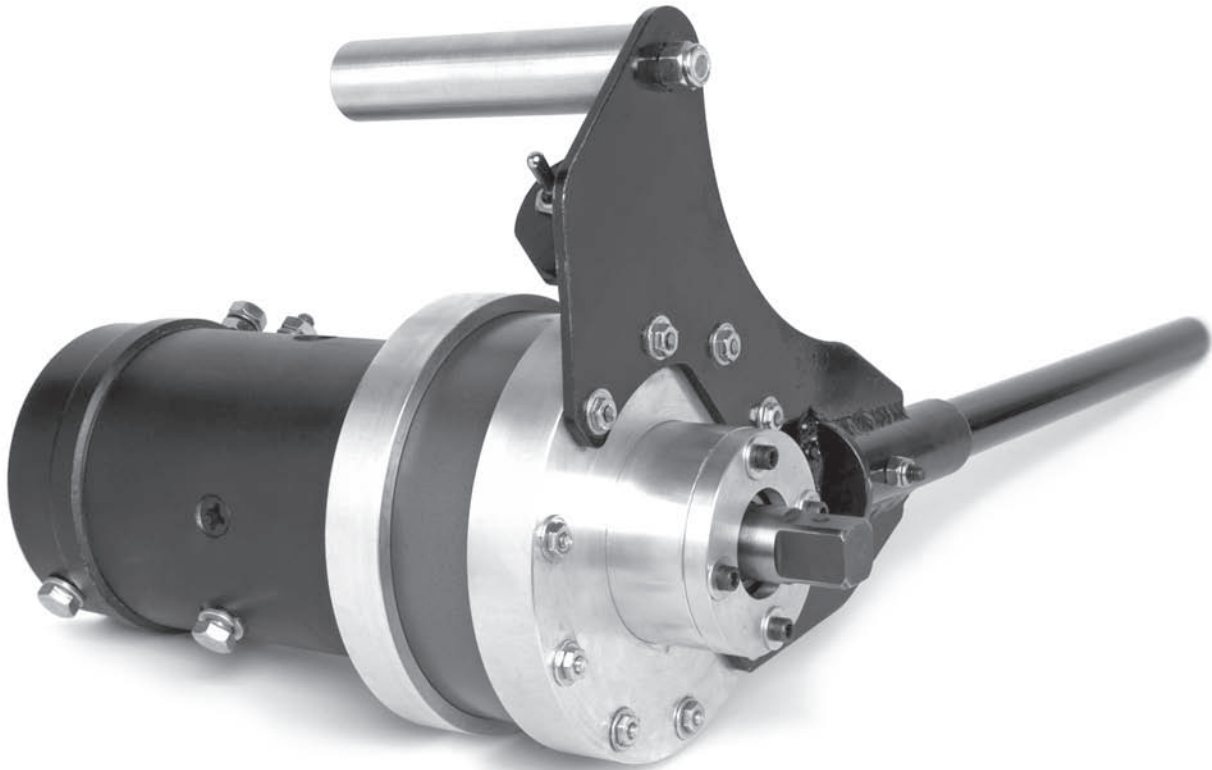


MODEL 5 A-POWER DRIVE



THE MODEL 5 A-POWER DRIVE

APPI's Model 5 A-Power Drive was designed to provide a dependable and portable means of powering high pressure tapping equipment. Permanently sealed, high efficiency planetary reduction, DC power and robust construction make it ideal for any power drive application.

SPECIFICATIONS

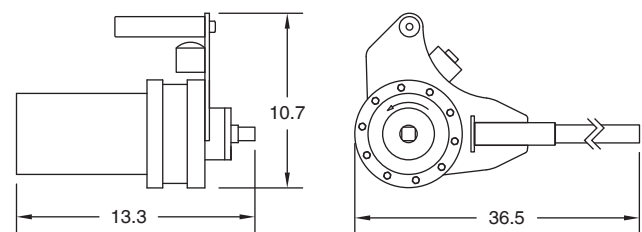
Load (%)	Torque (ft lbs)	Speed (rpm)
0	0	119
40	195	71
60	290	52
80	390	33
100	500	23

Output shaft: 3/4" square
Weight: 40 lbs

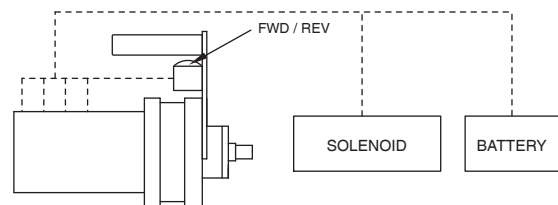
OPTIONS

AC electric, hydraulic and pneumatic motors
Custom output shafts

DIMENSIONS



POWER SCHEMATIC



ALLIED POWER PRODUCTS, INC.

6590 SW Fallbrook Place, Beaverton, OR 97008
(503) 626-0654 Fax (503) 646-1996
www.alliedpower.com